



ew 300-500 G4

EM 300-500 G4
SKM 300 G4-S
SKM 500 G4
SK 300 G4-RC
SK 500 G4

Quick Guide	Kort vejledning
Kurzanleitung	Παράρτημα
Guide rapide	Γρήγορος οδηγός
Guía rápida	Kısa Kılavuz
Guía de inicio rápido	Краткая инструкция
Guia rápido	快速指南
Beknopte handleiding	快速使用指南
Krótká instrukcja obsługi	クイックガイド
Snabbguide	퀵 가이드

SENNHEISER



www.sennheiser.com/download

Sennheiser electronic SE & Co. KG

Am Labor 1, 30900 Wedemark, Germany
www.sennheiser.com

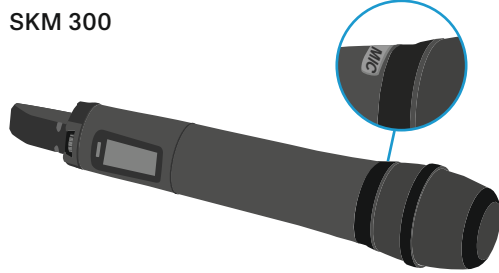
Printed in Germany, Publ. 11/24, 575861/A05

EM 300-500

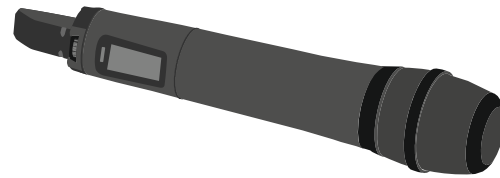


SKM 300 | SKM 500

SKM 300



SKM 500



SK 300 | SK 500

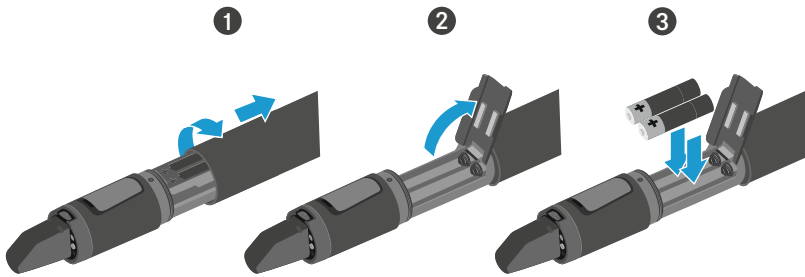
SK 300



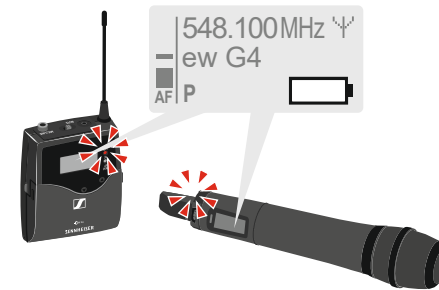
SK 500



Battery



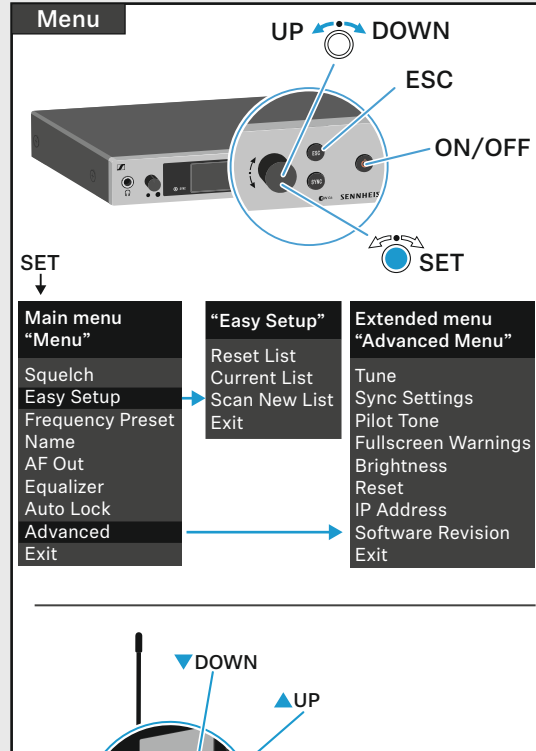
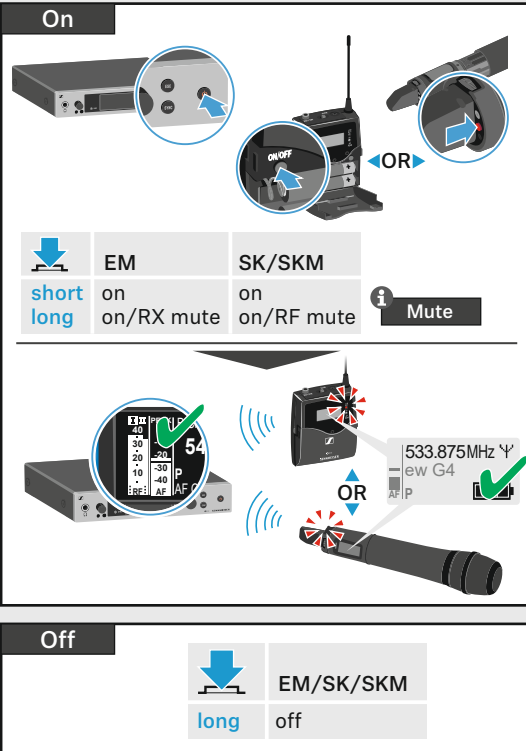
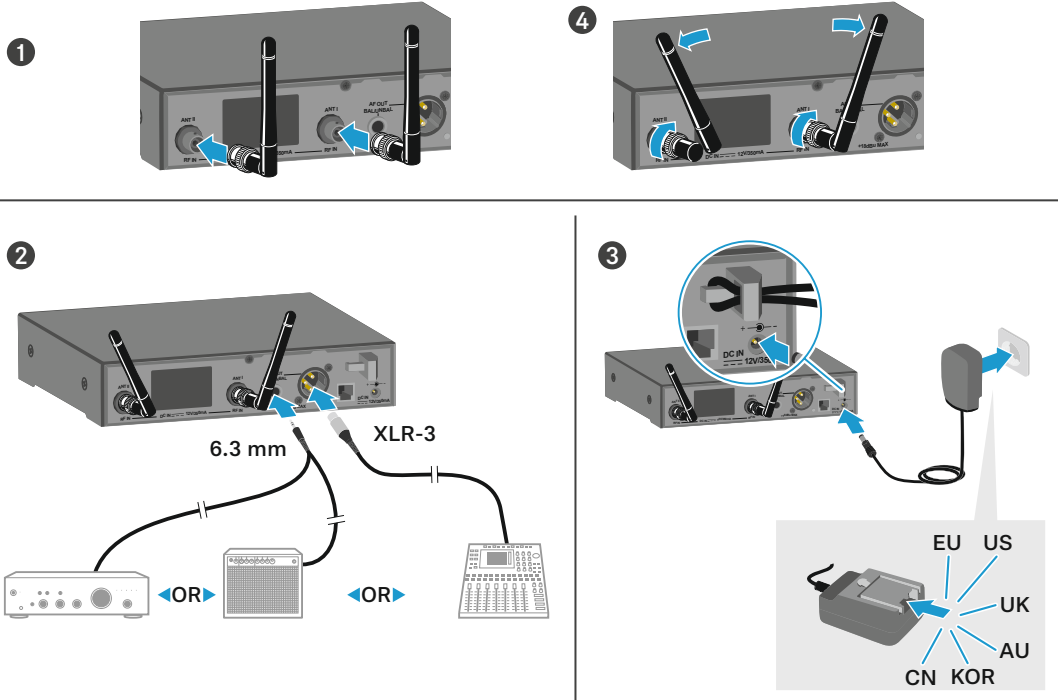
Low Battery



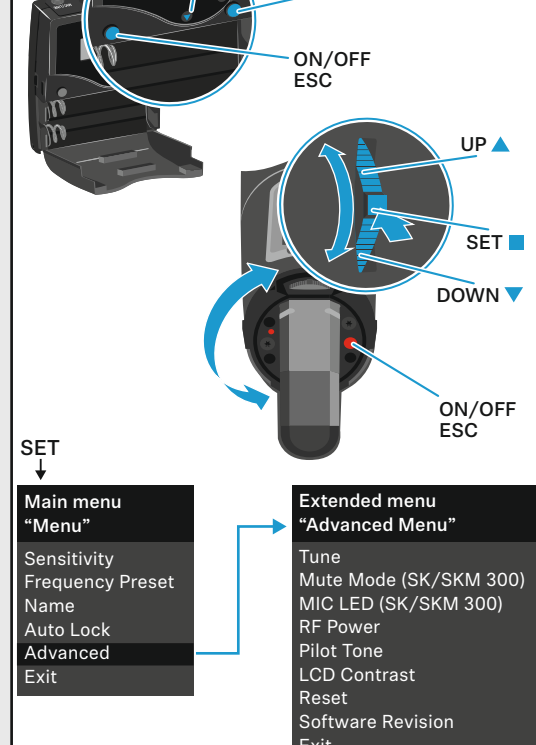
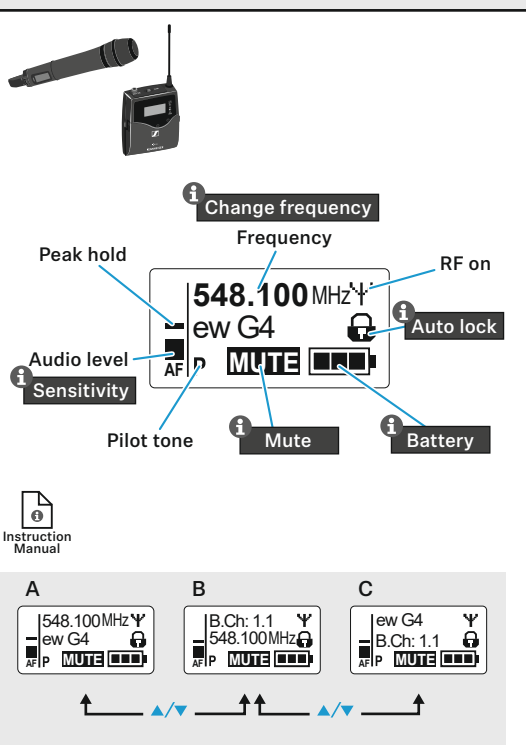
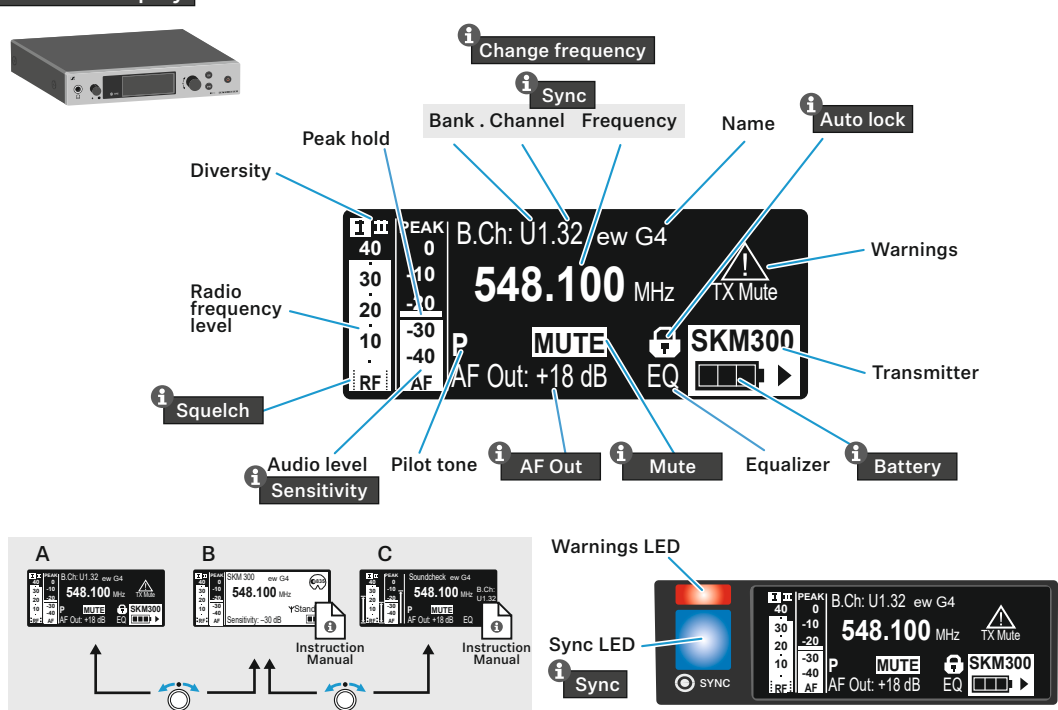
	100 %	> 8 h
	70 %	4 - 6 h
	30 %	2 - 3 h

LOW BATT

Setup



Standard display



Auto lock

EM

1. Press **SET**
2. Turn **LOCK** knob to **Unlock?**
3. Press **SET**

SK

1. Press **SET**
2. Press **LOCK** button
3. Press **SET**

SKM

1. Press **SET**
2. Press **LOCK** button
3. Press **SET**

Auto lock 10 s

Instruction Manual

Mute

Instruction Manual

SK 300

SKM 300 SKM 500

RF Mute On? Off? SET

AF Mute Mute On Off SET

Mute Mode AF On/Off RF On/Off Push to Talk Push to Mute SET SET SET SET SET SET

RF Mute On? Off? SET

RF Mute On? Off? SET

New frequency

Squelch

1. Press **SET**

25 dB

5 dB

Change frequency

2. SKM/SK off!
3. Press **SET**

Easy Setup EM	Frequency Preset EM, SK, SKM
Menu Squelch Easy Setup Frequency Preset	Menu Frequency Preset B.Ch: 1.1
Easy Setup Current List Scan New List Exit	Frequency Preset B.Ch: 2.6 558.025 MHz
Scan New List 1...20 518...558 MHz	Frequency Preset B.Ch: 2.1 558.025 MHz
Easy Setup Bank U6 Bank 1 Bank 2	Stored
Easy Setup B.Ch: 2.1 Sync 558.025MHz	

Stored

No frequency → 1 Squelch: Middle ...

Instruction Manual

Sync

4. Press **SET**

≤ 10 cm

≤ 4"

OR

SYNC

OR

× SYNC

Instruction Manual

EM 300-500

RX Mute On? Off? SET SET

short

Network Control

WSM Sennheiser Control Cockpit Media Control

Multichannel - Easy Setup

Bank 1...20; U1...U6

Channel 1...32

max. 32 channels

RJ 45

Instruction Manual

Sensitivity

Menu Sensitivity -24 dB

-60 dB ... 0 dB

-48 dB ... 0 dB

AF PEAK

AF out

Menu AF Out +18 dB

-24 dB ... +24 dB

LEVEL

SKM

ME 2 | MKE 2

ME 2

25 cm (10")

MKE 2

SL Headmic 1

2...3 cm (1")

ME 2 | MKE 2

ME 2

25 cm (10")

MKE 2

SL Headmic 1

2...3 cm (1")